

ICEL9 Scientific Conference Program

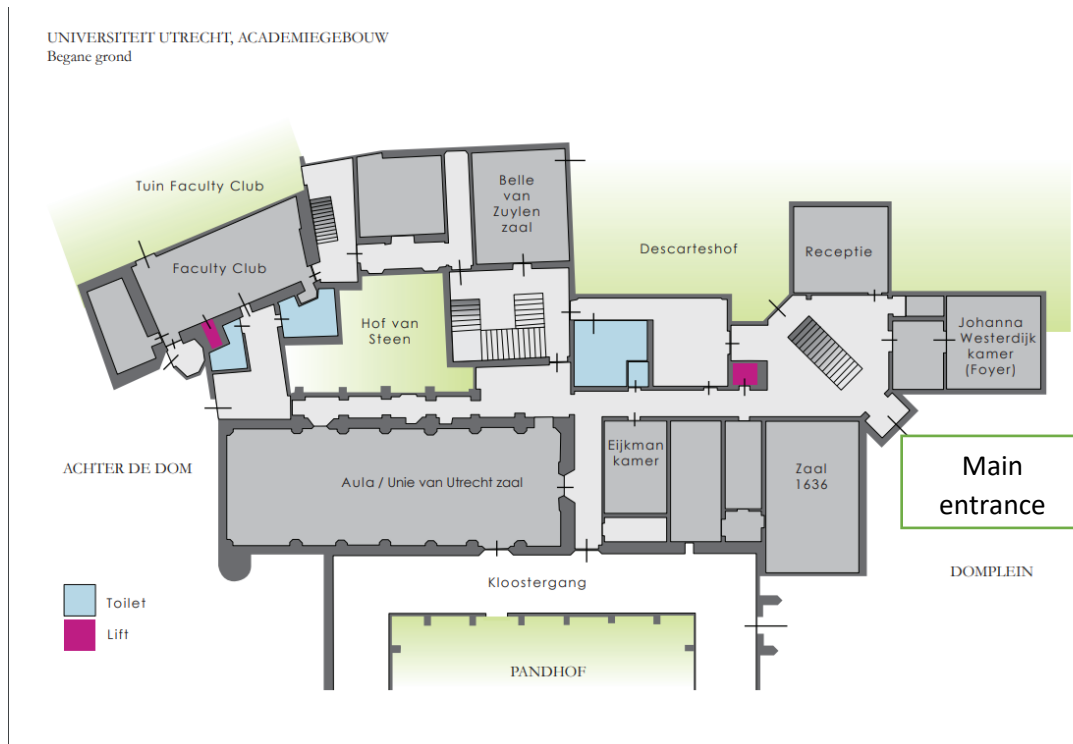
Utrecht, The Netherlands

TUESDAY 29TH AUGUST 2023

Location: University Academic Building (University Hall), Domplein 29, 3512 JE Utrecht, The Netherlands: [GOOGLE MAPS](#)



13:00	The International Task Force meeting on Laterality in Sport Horses (Room: Belle van Zuylen)
16:30-18:30	Registration with drinks (Room: Pandhof / Garden)



WEDNESDAY 30TH AUGUST 2023

Location: University Academic Building (University Hall), Domplein 29, 3512 JE Utrecht, The Netherlands: [GOOGLE MAPS](#)

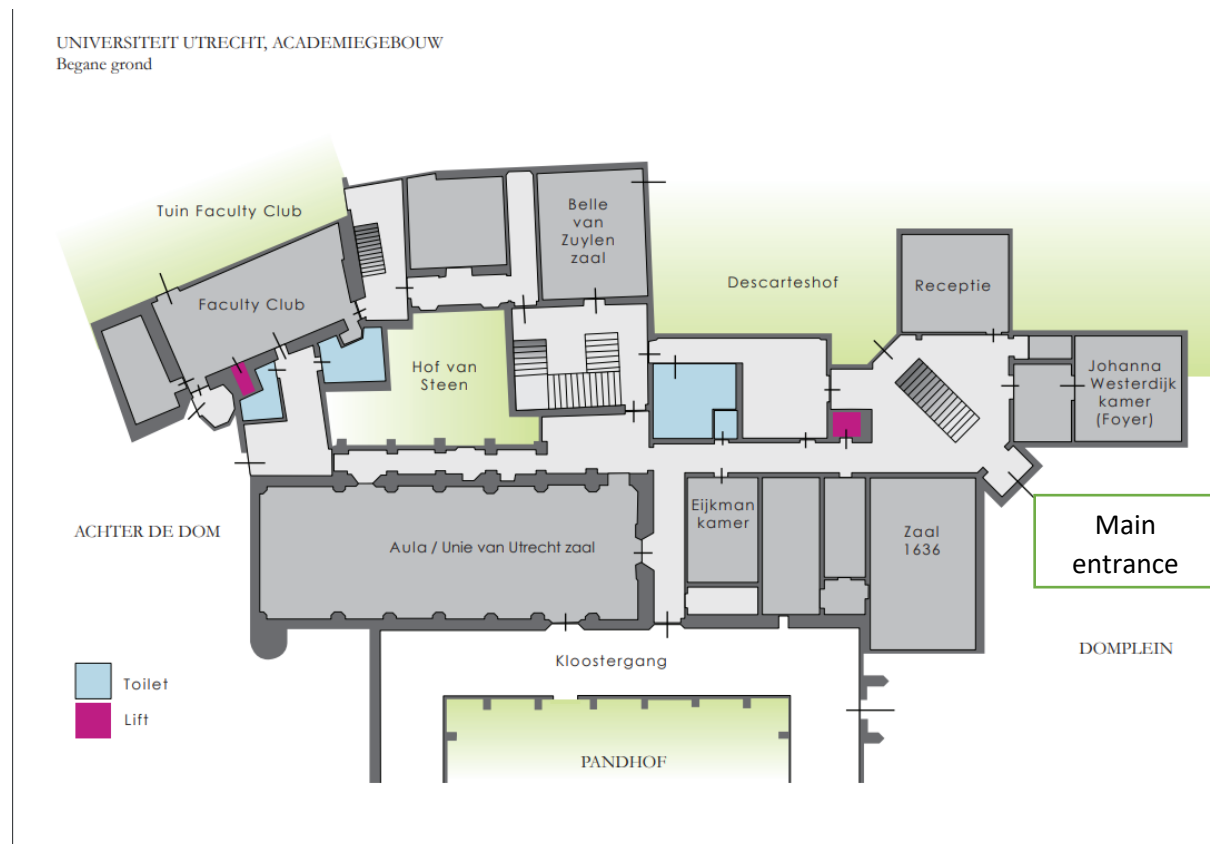


Lectures Room: Aula

Coffee break and Lunch: Pandhof (garden)

E-posters: Room Johanna Westerdijk

There will be lockers for your belongings with a digital pass-code. Lockers are located here and indicated by signs on the wall.



08:30	Registration with coffee
09:00	Welcome to the ICEL9 Utrecht 2023 (Hilary Clayton)
09:30	Keynote lecture, Henk Schamhardt Memorial Lecture (Brent Edwards)
Theater presentations (Modelling, Machine Learning) <i>Chairs: Christian Peham & Johan Lundblad</i>	
10:30	Applying deep learning to IMU data to classify lameness location in horses (Parmentier, J.I.M.)
10:42	Evaluation of DeepLabCut for markerless tracking of dogs performing agility behaviors (Olson, R.A.)
Short Theater presentations	
10:54	Surface types can be classified with equine IMU data and machine learning (Parmentier, J.I.M.)
10:56	Using dynamic time warping for robust and efficient straight trot stride identification (Martel, D.R.)
Coffee break - poster presentations (check poster schedule)	
Theater presentations (Horse-Saddle-Rider Interaction / Equitation Sciences) <i>Chairs: Lars Roepstroff & Ineke Smit</i>	
11:30	Pelvic kinematics of riders performing rising trot on a simulator compared to riding overground (Clark, L.)
11:42	Effect of noseband tightness on facial pressure during standing and chewing (Clayton, H.)
11:54	Do noseband type and tightness affect pressure distribution beneath the noseband when ridden in trot? (MacKechnie-Guire, R.)
12:06	Evaluating determinants of rider performance in high-level dressage riders (Hobbs, S.J.)
Short Theater presentations	
12:28	A preliminary study on the kinematics of monkey crouch riding at slow canter (Ohgi, Y.)
12:30	Thoracolumbar differential rotational movement of high-level horses in hand and in sitting trot (Slobodova, A.)
12:32	Effect of a half pad and shims on pressure distribution when used under a wide saddle (MacKechnie-Guire, R.)
12:34	Noseband type and tightness: effect on eye temperature and blink rate standing and eating a treat (Walker, V.)
12:36	Take-off velocity determines jump angle over a 1.10m vertical fence (Wilkins, C.)
12:38	Pilot study of locomotor asymmetry in unriden and ridden horses walking on a circle (Egenvall, A.)
12:40	Longitudinal study of vertical head and pelvic movement asymmetry in dressage horses (Bosch, L.)
12:42	The Influence of hard and soft surface on equine upper-body movement (Scheike, A.S.)
12:44	Impact of lunge direction on lameness severity in horses with naturally occurring forelimb lameness (Lundblad, J.)

12:46	Upper body range of motion in horses is influenced by lameness severity and trotting speed (Marunova, E.)
12:48	The effect of dynamic mobilisation exercises on equine movement symmetry (Johnson, L.F.)
12:50	Kinetics analysis of effects of different angles of box during turning in flyball dogs (Wills, A.)
12:52	Markerless motion capture for evaluation of biomechanical strategies in agility teeter performance (Pechette Markley, A.)
12:54	Does order and location of movements within Olympic GP Freestyle Dressage influence movement scores? (Williams, J.M.)
12:56	Diagonal dissociation in collected and extended trot in Prix St George and Grand Prix dressage (Thonke, A.)
Lunch - poster presentations (check poster schedule)	
14:00	Keynote lecture (Jaap van Dieën)
Theater presentations (Clinical Applications, Lameness, Part 1) <i>Chairs: Thilo Pfau & Olivia Kenny</i>	
15:00	Compensatory asymmetry in horses with naturally occurring lameness on the lunge – a multicenter study (Persson-Sjodin, E.)
15:12	Assessing static postural types in sport horses (Tabor, G.)
15:24	Longitudinal study of vertical head and pelvic movement asymmetry in event horses (Buyck, C.)
15:36	Facial activities in trotted horses during progression and regression of induced lameness (Ask, K.)
15:48	Are certain positive diagnostic blocks more common in impact or push-off lameness patterns? (Hernlund E.)
Coffee break - poster presentations (check poster schedule)	
Theater presentations (Sports Applications) <i>Chairs: Hilary Clayton & Vicki Walker</i>	
16:30	Effect of jump height on kinetics at take-off in agility dogs (Inkilä, L.)
16:42	Continuous data analysis can reveal upper-body movement adaptations in horses on an aquatrainer (te Moller, N.C.R.)
16:54	Trunk kinematics of horses when jumping in an International Puissance competition (Deillon, D.)
17:06	The effect of fatigue on locomotion in young Friesian stallions during a 10-week training programme (Siegers, E.W.)
17:18	Back flexion-extension in free jumping warmbloods (Roepstorff, L.)

THURSDAY 31ST AUGUST 2023

Location: University Academic Building (University Hall), Domplein 29, 3512 JE Utrecht, The Netherlands: [GOOGLE MAPS](#)



8:30	Morning coffee
09:00	Keynote lecture (Emma Hodson-Tole)
Theater presentations (Muscle, EMG) Chairs: Christian Peham & Mikaela Maldonado	
10:00	Effects of incline on muscle activity of hind limbs during canter on a treadmill (Takahashi, Y.)
10:12	Which sEMG variable distinguishes best between non-lame and induced lameness conditions in horses? (St. George, L.)
10:24	Longissimus dorsi muscle activity in sound horses during in-hand trot on a straight line and circle (Suskens, J.J.M.)
Short Theater presentations	
10:36	How different skin preparation methods affect surface electromyographic measurements in the horse (Smit, I.H.)
10:38	Mediolateral hock motion: relationship with pelvic symmetry and hindlimb muscle development (Maddock, C.)
10:40	Understanding the role of muscle activity on tendon and ligament strain within the equine forelimb (Kenny, O.)
10:42	Differences in gait quality parameters between Franches-Montagnes and Swiss Warmblood horses (Haraldsdóttir, E.H.)
10:44	Differences in joint angles from photographs between six European breeds – preliminary results (Weishaupt, M.A.)
10:46	Trunk roll rotations of dressage horses in canter vs. counter canter (Clayton, H.M.)

Coffee break - poster presentations (check poster schedule)	
Theater presentations (Fundamentals of Locomotion) <i>Chairs: René van Weeren & Eva Marunova</i>	
11:30	Back motion is largely passive in sound horses at walk (Smit, I.H.)
11:42	Gait characteristics in a free ranging dog from a GPS-accelerometer: proof of concept (Pfau, T.)
11:54	Differences in racing Thoroughbred movement asymmetries based on racing and training direction (Martel, D.R.)
11:06	A comparison of limb kinematics between jog and high-speed trot in Standardbred trotters (Aarts, R.M.)
12:18	Back angles of the unriden horse on the circle - in walk, trot and canter (Egenvall, A.)
12:30	Quantifying back movement during sternal and croup reflexes using mounted inertial measurements units (Walker, V.)
Short Theater presentations	
12:42	A Pilot Study Evaluating the Kinetics of Dogs During Work (Kieves, N.R.)
12:44	The effect of trotting speed on upper-body motion in Standardbred warmblood trotters (Aarts, R.M.)
12:46	Use of IMU-sensors to assess the immediate effects of physiological horseshoeing on the locomotion (Simoes, J.)
12:48	Motion analysis of show jumping horses during jumping over single vertical fences (Fercher, C.)
12:50	Jockey position and surfaces affect kinematics and coordination in trotting racehorse-jockey dyads (Horan, K.)
12:52	Bias in the lateral movement of the equine jump (Baby, R.M.F.)
12:54	Damping material placed underneath sand on a track reduces the limb's loading rate at training speed (Munoz-Nates, F.)
12:56	An investigation of forehoof kinetics in young foals at walk (Faramarzi, B.)
Lunch - poster presentations (check poster schedule)	
14:00	Keynote lecture (Martin S. Fischer)
Theater presentations (Clinical Applications, Lameness, Part 2) + Functional Anatomy <i>Chair: Nathalie Crevier-Denoix & Jeanne Parmentier</i>	
15:00	Injury risk factors associated with training and competition in flyball dogs (Tabor, G.)
15:12	Observing veterinary students during subjective lameness assessment using eye-tracking technology (Van Zalen, S.N.)
15:24	Effect of transcutaneous electrical nerve stimulation (TENS) on gait parameters in dogs (Anja Pedersen, A.P.)

15:36	Chiropractic treatment of lameness and concurrent axial skeleton pain and dysfunction in horses (Maldonado, M.D.)
15:48	The effect of the sternum lift and different head and neck positions on thoracolumbar posture (Landskron, D.)
16:00	Racing performance and dorsal spinous process radiographic abnormalities in 265 National Hunt horses (Le Jeune, S.S.)
Coffee break - poster presentations (check poster schedule)	
Theater presentations (Clinical Applications, Lameness, Part 2) Chair: Michael Weishaupt & Rhana Aarts	
16:30	Influence of lunge direction on lameness severity in hindlimb lame horses (Rhodin, M.)
16:42	Speed of sound variation as an indicator of tendon functional recovery after an injury in ten horses (Crevier-Denoix, N.)
16:54	Comparison between IMU-based, markerless technology and subjective evaluation in detecting lameness (Kallerud, A.S.)
17:06	Walk characteristics of horses clinically lame in trot (Mellbin, Y.)
Posters	
18:30 - 23:00 Enjoy and Relax!	
ICEL9 Dinner, Restaurant LE:EN the Drain (Heuveloord 130, 3523 CK UTRECHT)	

E-poster sessions

WEDNESDAY						
Screen	Session1	Wed, 11:00-11:30	Session2	Wed, 13:00-14:00	Session3	Wed, 16:00-16:30
1 A	Parmentier, J.I.M.	40942	Ohgi, Y.	40949	Lundblad, J.	41019
2 A	Martel, D.R.	40947	Slobodova, A.	40975	Marunova, E.	40963
3 B	Sugiyama, F.	40943	MacKechnie-Guire, R.	40976	Johnson, L.F.	40969
4 B	St. George, L.	40946	Walker, V.	40978	Wills, A. / Blake, S.	40948
5 C	Giraudet, C.	40996	Wilkins, C.	40993	Pechette Markley, A.	40965
6 C	Gotthardt, J.	41007	Egenvall, A.	41023	Williams, J.M.	40989
7 D	Nascimento, C.	41011	Bosch, L. / Mokry, A.	40952	Thonke, A.	41014
8 D	Inkilä, L.	40935	Scheike, A.S.	40990	Gmel, A.I.	41005

THURSDAY						
Screen	Session4	Thu, 11:00-11:30	Session5	Thu, 13:00-14:00	Session6	Thu, 16:12-16:30
1 A	Smit, I.H.	40940	Kieves, N.R.	40925	Ramon, T.	41013
2 A	Maddock, C.	41015	Aarts, R.M.	40986	Horan, K.	40957
3 B	Kenny, O.	41009	Simoës, J.	40998	Clark, K.S.	40971
4 B	Haraldsdóttir, E.H.	41008	Fercher, C.	40999	Clark, K.S.	40937
5 C	Weishaupt, M.A.	41029	Baby, R.M.F.	40960	Scales-Theobald, E.	40941
6 C	Clayton, H.M.	40983	Baby, R.M.F.	40961	Scales-Theobald, E.	40953
7 D	Brkljaca Bottegaro, I	40962	Munoz-Nates, F.	41026	Lenarz, J.	40959
8 D	Edmund, M.	40991	Faramarzi, B.	41062	Lynn, G.E.	41042

FRIDAY 1ST SEPTEMBER

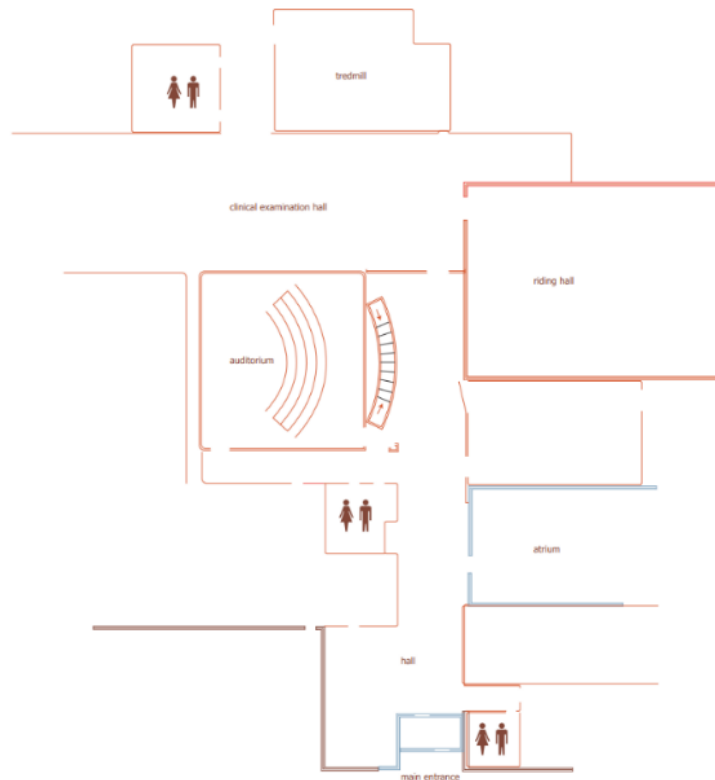
Location: ([Academic Veterinary Hospital](#), Yalelaan 114, 3584 CL Utrecht, The Netherlands) [GOOGLE MAPS](#)



Lectures Room: Lecture Hall Small Animals

Coffee break: Hall from Lecture Hall Equine

Workshops: Indoor riding arena, outdoor riding arena, treadmill room, lecture rooms. You will be guided to these locations.



09:15- 10:00	Consensus for animal locomotion research – round table discussion
--------------	---

Program continues in the next page...

Workshops

	10.00 - 10:30	Coffee Break				Coffee Break
Round I	10.30 - 12:00	Workshop Session 1a	Workshop session 1b	Workshop 1c	10:30-12:30	Workshop session 1d
		Canine gait analysis GD teaching room	Data analysis Lecture hall	sEMG Treadmill room		Equine kinematics Indoor trotting up area/outdoor arena
	12.00 - 13:30	Lunch				12:30-13:30
Round II	13.30 - 15:00	Workshop Session 2a	Workshop Session 2b	Workshop 2c	13:30-15:30	Workshop session 2d
		sEMG	Horse-rider interaction	Data analysis		Equine kinematics
		Treadmill room/teaching rooms	Indoor arena	Lecture hall		Indoor trotting up area/outdoor arena
	15:00 - 15:30	Coffee Break				Coffee Break
Round III	15.30 - 17:00	Workshop Session 3a	Workshop 3b			
		Canine gait analysis	Horse-rider interaction			
		GD teaching room	Indoor arena			
	17:00 – 17:45	Closure talk/Afternoon Drinks				

The workshop sessions are proudly sponsored by:

Equine Kinematics



Surface EMG



Canine gait analysis

